

**RETROFIT TERMINAL:**

Model R-650 was developed in response to retrofit projects. The R-650 incorporates a flow cross sensor and a bell-mouth for smooth laminar flow.

**STANDARD FEATURES:**

1. Cross Flow Sensor
2. Bell Mouth Entrance
3. Bronze Oilite Bearings
4. Low Leakage Blade Seals
5. 1/2" [19.05mm] O.D. Solid Aluminum Machined Shaft
6. Self-adhesive backed flange

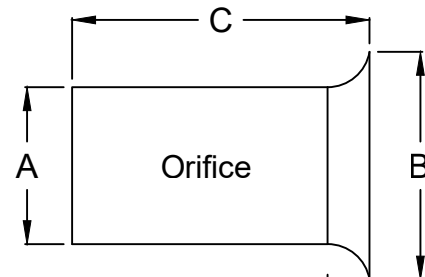
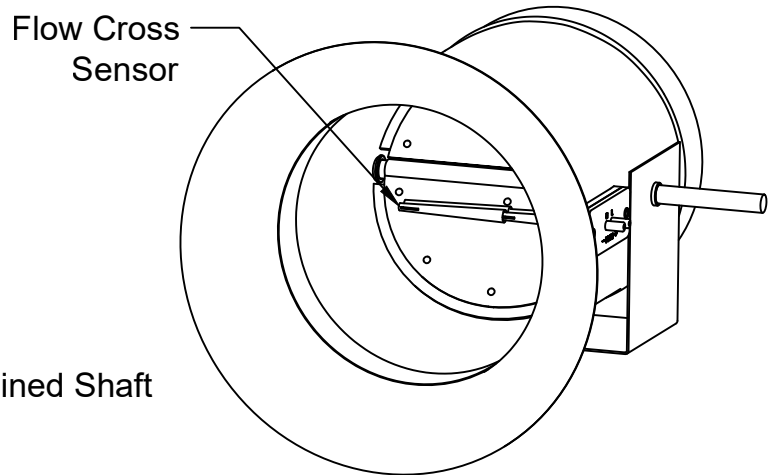
**OPTIONS:**

- All Stainless Steel Construction
- Controls Available (Pneumatic or Electronic)
- Motor and/or Controls Enclosure
- Omitt Motor Mounting Plate
- Extended Shaft

**MOUNTING:**

Peel Paper away from gasket  
 -stick in place- finish off with  
 Sheet metal screws.

- Variable Air Volume
- Constant Volume



1 1/2" [38.1mm] R

Single Orifice		Dimensions				
Diameter	CFM	Sensor Model	A	B	C	Body and Blade
4	45-301	SSS-10x2	4"	8"	8"	*24 ga.
5	65-470	SSS-10x2	5"	9"	8"	*24 ga.
6	80-648	SSS-10x3	6"	10"	8"	*24 ga.
7	105-882	SSS-10x3	7"	11"	8"	*24 ga.
8	145-1117	SSS-10x4	8"	12"	8"	*24 ga.
9	175-1414	SSS-10x4	9"	13"	8"	*24 ga.
10	230-1745	SSS-10x5	10"	14"	8"	*24 ga.
12	325-2513	SSS-10x5	12"	16"	8"	*24 ga.
14	450-3421	SSS-10x5	14"	18"	8"	*24 ga.
16	580-4468	SSS-10x5	16"	20"	8"	*24 ga.

CFM shown is controlling range- unit is capable of shut-off.

Job Name:	<input type="checkbox"/> <b>MODEL R-650</b>		
Location:			
Architect:	DRAWN BY:	DATE:	REV. DATE:
Engineer:	VD	08-21-99	7-21-21
Contractor:	REV. NO.	APPROVED BY:	DWG. NO.:
	10	BGT	<b>L-7</b>